

2tec2[®]
high tech flooring

Infinite - Moonrock



SECTOR BROCHURE
HEALTHCARE

High-tech
woven
flooring

What is 2TEC2 flooring?



Combining the best of hard and soft flooring in a unique hybrid woven flooring solution



2TEC2 is a Belgian company devoted to designing and producing high-tech woven flooring.

We combine the durability and cleanability of hard flooring with the acoustic properties and comfort of softer flooring.

We offer a vast library of designs and colours, available in both rolls and tiles.

2TEC2 - woven high-tech flooring suits every demand in healthcare environments.

Why choose 2TEC2 for healthcare spaces?



Healthcare facilities demand excellence in equipment and flooring that controls contamination, resists to germs and bacteria and can be disinfected regularly while maintaining their function and beauty. Surfaces need to be non-porous and anti-microbial to repel disease and infection.

Discover unparalleled comfort with 2TEC2's collection, designed to elevate patient satisfaction and well-being. Our luxury woven flooring combines safety, cleanliness, and ultimate comfort, essential in any healthcare setting.

Advantages of 2TEC2 woven flooring

CHARACTERISTIC	2TEC2 tiles	Carpet tiles	LVT	Laminate	Hard wood	Concrete Ceramic
Long lifespan	■	■	■	■	■	■
Wheelchair friendly	■	■	■	■	■	■
Thorough cleaning	■	■	■	■	■	■
Easy spot cleaning	■	■	■	■	■	■
Suitable for disinfection	■	■	■	■	■	■
Comfort under foot	■	■	■	■	■	■
Anti-bacterial properties	■	■	■	■	■	■
Anti-mold properties	■	■	■	■	■	■
Hypoallergenic properties	■	■	—	—	—	—
Sound reduction	■	■	■	■	■	■
Easy replaceable	■	■	■	■	■	■
Design flexibility	■	■	■	■	■	■
Pleasant aesthetics for well-being	■	■	■	■	■	■

— Not applicable ■ Lower performance ■ Higher performance

Functionality as our priority

1. Superior Hygienic Standards

Luxurious woven floors by 2TEC2 offer easy maintenance and a stylish appearance.

- Hygienic & easy to clean
- Odourless
- Anti-allergic properties
- Suitable for disinfection
- Anti-mold properties



2. Easy to Maintain

Easy regular cleaning is probably the most important feature of any surface in a healthcare environment.

- Simple & fast cleaning
- Waterproof
- Dust resistant structure
- Staff & patient well-being



General cleaning instructions:

- Vacuum your floor regularly to avoid dirt buildup.
- Remove dirt, stains and liquids by simply using water and a microfibre cloth without any additives as quickly as possible.
- Diluted detergent or bleach may be used for persistent stains, rinse after.
- Perform a deep cleaning at least once a year to elongate the life of your floor and keep it as beautiful as it was intended.
- Use a water injection/extraction device. Steam cleaning appliances are not recommended.



3. Durable and Enduring

In the demanding environment of hospitals, durability is paramount. That is why 2TEC2 floors' longstanding materials are engineered to withstand heavy foot traffic with ease. Repelling disease and infection is impossible if your flooring surface degrades under the stress of intensive cleaning and heavy use.

Flooring materials need to offer exceptional mobility for wheelchairs, hospital beds, carts, and to reduce slip and fall liability.

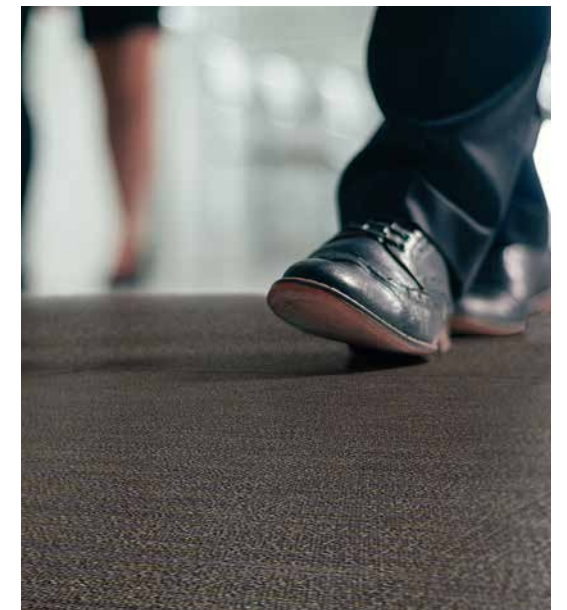
- Wheel chair resistant
- Class 33 performance (EN1307)
- Warranty of 15 years
- Appearance retention over time



4. Ultimate Comfort and Tranquility

Experience safety and serenity with our flooring, we offer unparalleled underfoot comfort for patients and visitors alike.

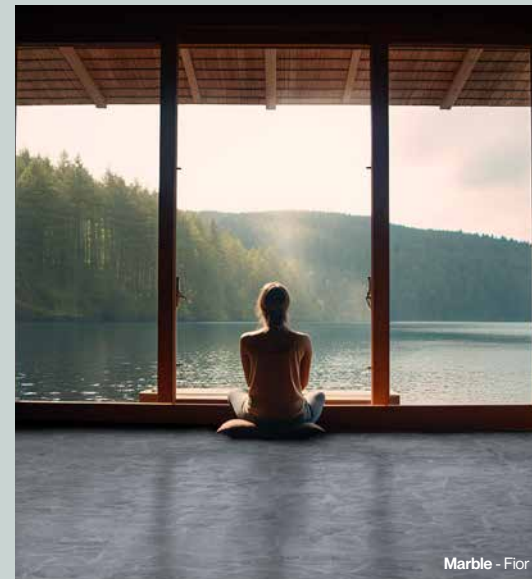
- Acoustic sound absorption thanks to SonoFelt™
 - 19 dB impact sound reduction
 - 70% walking noise reduction
 - 0.15 α_w acoustical sound absorption
- Slip resistant
- Fire retardant
- Anti-static properties
- Comfort underfoot for staff & patients



Wellbeing & Safety

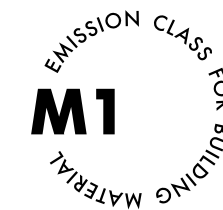
In our evolving world, safety and wellness are crucial. 2TEC2's cutting-edge flooring offers enhanced hygiene, healthy environments, effortless cleaning with just water (no chemical detergents needed) and improves indoor air quality with low VOC emissions.

- Phthalate-free top woven layer
- Low VOC Emissions (Air Comfort Gold & Floorscore certified)
- Anti-mold properties
- Anti-allergic properties
- Reach compliant
- Fire retardant (Bfl-s1/ A rating)
- Slip resistant



Certificates & Labels

We comply with a series of respected international certificates and labels, to show the world how much we care about product quality, human health and the environment.



We contribute to healthy buildings

2TEC2 understands the importance of providing credible and transparent evidence of our commitments and actions.

We aim to help our customers achieve certification with internationally renowned building certification schemes LEED (20 credits) and BREEAM (16 credits).

Combining practicality with design

Design solutions



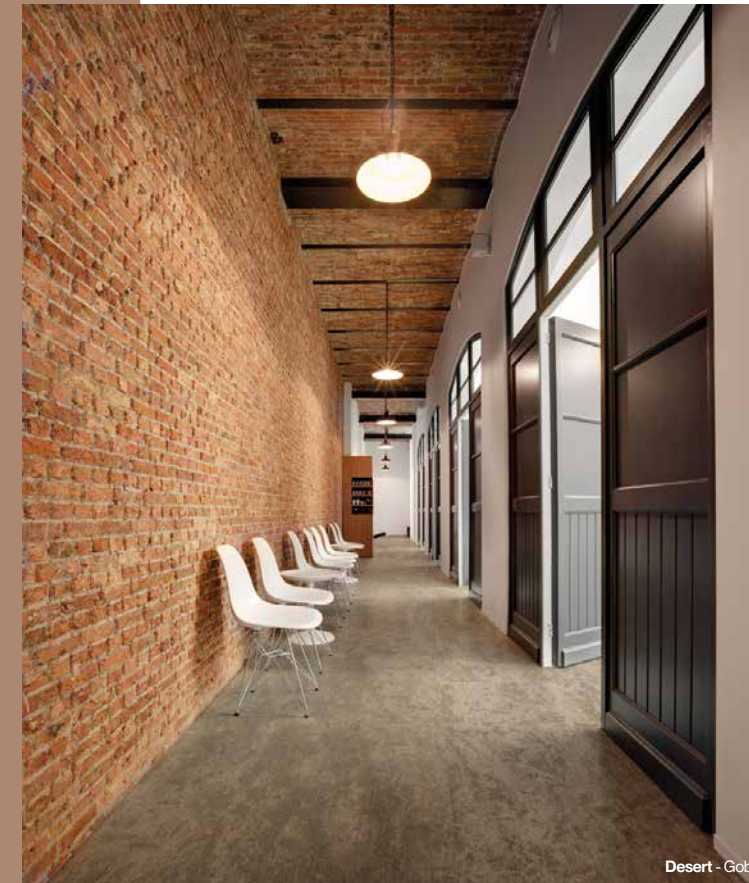
With 2TEC2's extensive color options and versatile designs, you can customize healthcare spaces for maximum patient comfort. Our diverse collections offer abundant patterns and colors in rolls, planks, and tiles, providing flexibility in installation for a unique environment.



Infinite - Moonrock



Infinite - Coffee Bean



Desert - Gobi

- 75 products across 12 collections offer diverse design options.
- Available in rolls and tiles of various shapes and sizes.
- Provides freedom to enhance healthcare spaces with unique designs.
- Ideal for various healthcare environments, including corridors, reception areas, and break rooms.
- Flooring solutions adapt to each area's specific demands.
- Suitable for dividing open spaces into functional sections through floor zoning.



Hybrid - Celeste

Uniting style with Sustainability



2TEC2 strongly believes that style goes hand in hand with sustainability. As a company it is our responsibility to preserve and protect the world beneath our feet. That is why we heavily invest in durable, recyclable materials and responsible production processes. We consider it our privilege to help you implement your vision on sustainability.

1. Responsible

2TEC2 has a plan to minimize our carbon emissions and reduce our ecological footprint.

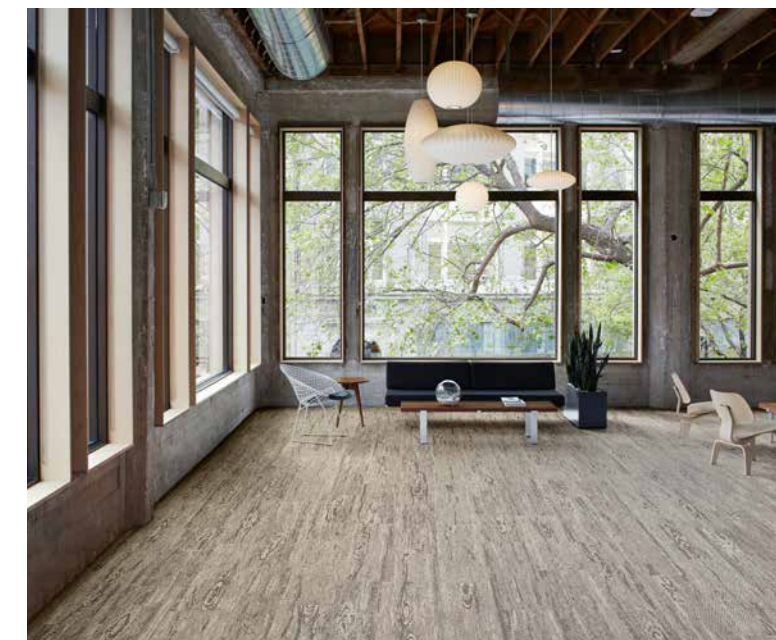
- We make use of solar power and an energy storage installation.
- We apply heat and water recovery techniques.
- We integrate all our production operations in one central location, reducing carbon emissions from transport and guaranteeing complete control over the production process.



3. Reuse and reduce

2TEC2 strives to close the loop and use as much recycled content as possible to reduce waste.

- We use recycled PET, coming from post-consumer waste, in our Sonofelt™ backing.
- We re-introduce all our pre-consumer waste into our production process to make new products.
- We are 100% recyclable.



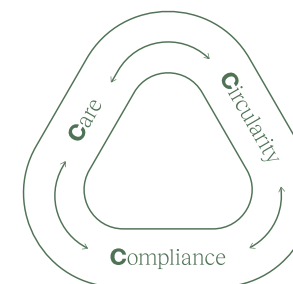
2. Eco-conscious materials

2TEC2 is devoted to using sustainable and renewable materials of great quality. We strive to avoid any harmful content.

- 45% bio-based carbon is used in the compound formulation of the woven toplayer of the Strata collection to replace virgin fossil based material.
- We don't use any phthalates or heavy metals in the production of our flooring.
- Our floors emit very low VOC emissions, benefiting both people and planet.

Care

Care for the planet & environment
Care for people & health



Circularity

Circularity
Recycling
Re-use

Compliance

Contributing to building ratings
Certificates & labels

2TEC2 wrap-up

- Acoustic sound absorption
- Hygienic & easy to clean
- Fire-retardant
- Wheel chair resistance
- Endless design creativity
- Healthy indoor air quality
- Slip-resistant
- Suitable for raised flooring system
- Non-permanent floor solution
- Colour fastness/UV resistance
- Dirt-hiding & stain resistant
- Suitable for disinfection
- Seamless
- Anti-static properties
- Innovative design
- Odourless
- Anti-mold properties
- Structure & texture
- Easy installation
- Long-lasting fresh appearance



Order free 2TEC2 samples

Get in touch with our worldwide sales network to help you find the perfect floor for your project. Our 2TEC2 team is ready to answer all your questions.

2tec2[®]
high tech flooring

Europe / International samples :
www.2tec2.com

Material Bank

USA / Canada samples :
www.materialbank.com



EU



US

HQ & showroom - Chaussée d'Aelbeke 284, 7700 Mouscron, Belgium - T +32 (0)56 85 47 47 - E sales@2tec2.com - W 2tec2.com